



“FORT KNOX” DOCKING STATION

User Manual
DA-74001

Please read the following instructions carefully before using the product.

“FORT KNOX” is compatible with SATA type 3.5” and 2.5” HDD/SSD. The product doesn't include a HDD/SSD. Users have to purchase and install their own HDD. DIGITUS cannot take any responsibility to any HDD failures, users would need to contact the HDD manufacturers in relation to any HDD malfunction.

“FORT KNOX” doesn't support “Hot Plugging” for AES hardware encryption. Before replacing HDD (2.5” or 3.5”), users must turn (power) off “FORT KNOX” and then, replace HDD

Please don't place any magnetic material around “FORT KNOX”. It may damage the data of HDD installed in “FORT KNOX”. Also, don't drop or cause any hard impact to the “FORT KNOX”. HDD can be damaged easily by magnetic material or strong impact. It is always advisable to back up important data.

The encryption of “FORT KNOX” is hardware based. “FORT KNOX” can connect and work with all OS. Embedded devices and media players which support USB host.

Basically “FORT KNOX” uses AES (Advanced Encryption Standard) 256 bit encryption algorithms. Additionally, it supports higher level encryption management via Password input and Master-key registration. If a user loses or forgets a master-key and password, we (DIGITUS) can't rescue or recover any data. User need to format the HDD to use it again.

“FORT KNOX” doesn't use any SW for encryption. Users can set up the security by inputting 4-8 digits password via front touch panel buttons of “FORT KNOX”.

“FORT KNOX” encrypts the entire HDD, once encrypted it is impossible to read or decode any data on the HDD even though it's connected with other PC systems.

“FORT KNOX” supports User Password protection feature. If user enter wrong password 3 times in a row, the interval to ask password input is lengthened continuously.

If users forget the Password of “FORT KNOX”, users have to visit our official A/S center or country official distributor to rescue and recover HDD data. When visiting A/S center, users should bring both “FORT KNOX” (HDD) and Master-Key. Master-key shows the authentication of owner of “FORT KNOX”.

“FORT KNOX” supports both security and normal mode. In case of security mode (with password input), it takes 10 seconds longer booting-time than normal mode. It's because “FORT KNOX” is re-connected after stand-by for the security mode activation and safety connection.

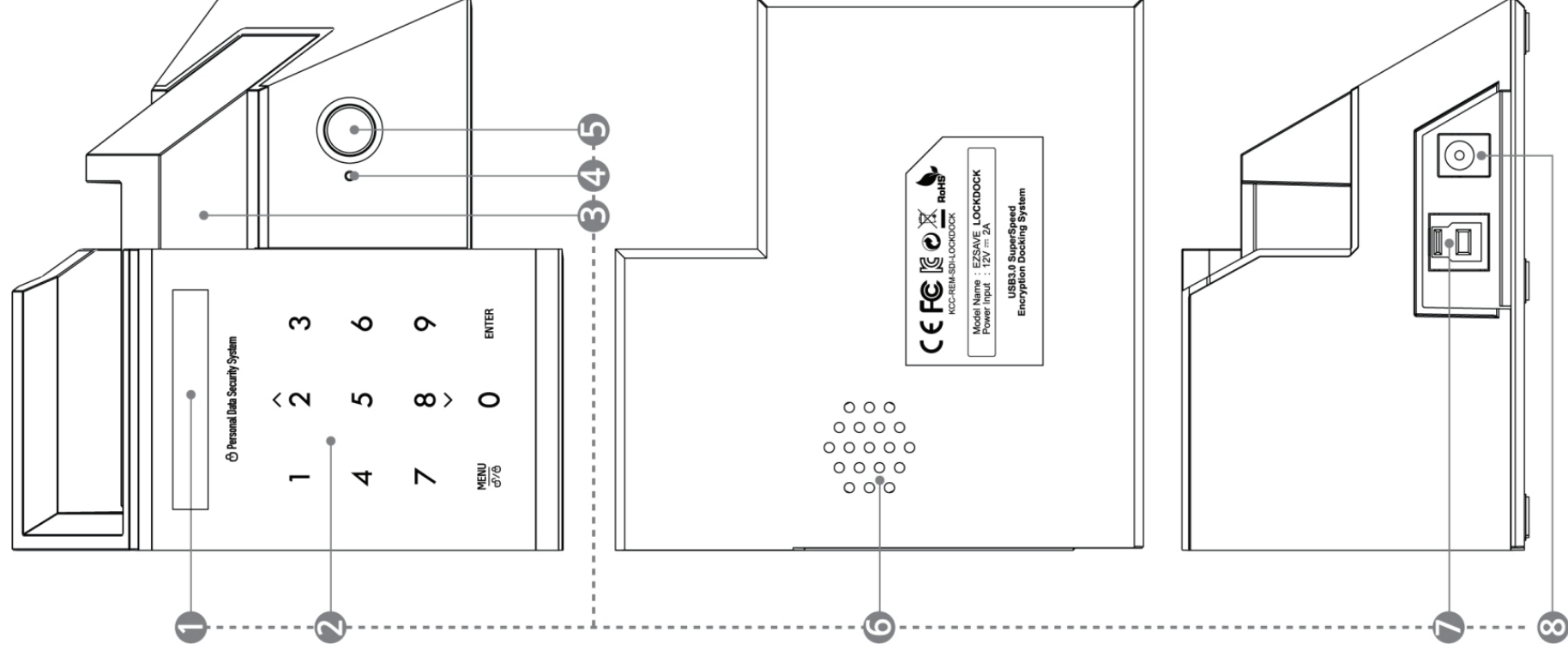
“FORT KNOX” supports 'un-mount' feature. When disconnecting “FORT KNOX” from PC, please use 'un-mount' feature on “FORT KNOX” or 'Safely Remove Hardware' of Windows. If you disconnect USB cable during data transfer, data loss may occur. Please pay attention to it.

“FORT KNOX” supports USB3.0 Super-Speed. Data transfer speed (reading and writing) of “FORT KNOX” can be affected by the performance (RPM) of HDD. The data transfer speed of 7,200RPM HDD is rather faster than 5,200RPM HDD.

SPECIFICATION

Model name	DIGITUS “FORT KNOX”
Power Source	AC adaptor (12V, 2A)
HDD	3.5 inch, 2.5 inch SATA I, II, III HDD/SSD
Interface	USB 3.0 SUPER SPEED (Max 5Gbps) (USB3.0 Max speed is available when it's connected with USB3.0 host device.) USB2.0 compatible
OS	All Operating Systems recognizing USB storage device.
Size/Weight	(W) 121 x (H) 76 x (D) 116mm / 185g(w/o HDD)
Accessory	“FORT KNOX” (with bracket for 2.5” HDD), AC adaptor, USB3.0 cable, User Manual, Superfine Cloth

Each part and function



- OLED display window: shows the menu and password input of “FORT KNOX”.
- Touch Panel: supports menu navigation and password input via Capacitance Touch switching technology.
- 2.5” HDD bracket: Shake proof bracket for 2.5” HDD/SSD.
- Power LED: Stand-by mode (RED), Power on (BLUE)
- Power Button: Turn on and off “FORT KNOX” by pressing the Power Button.
- Speaker: Voice support for main functions.
- USB Port: Connect “FORT KNOX” with various PC and devices via USB3.0 port. (Compatible with USB2.0 devices also)
- DC IN: Use and connect the AC adaptor (12V, 2A) included in basic accessory.

HDD Installation (3.5 inch type)

As below picture, install 3.5” HDD with vertical direction. In case of HDD installation with wrong or slant direction, it can cause damage of SATA connector of HDD.



HDD Installation (2.5 inch type)

Please use 2.5” HDD bracket (cover) for 2.5” HDD/SSD installation. 2.5” HDD/SSD should be installed vertically and correctly.



Caution: Before changing HDD, turn (power) off “FORT KNOX”.

- “FORT KNOX” doesn't support “Hot Plugging” due to Data Encryption (AES) processing.
- When changing HDDs, “FORT KNOX” should be powered off.
- In case of HDD changing in the power on status (“FORT KNOX”), it can cause damage on data on HDD. We don't have any duty or responsibility on it.

Note (USB3.0 cable)
Please use an authentic and original USB 3.0 cable for the USB3.0 Super Speed and stable performance.

USE as an external HDD (Normal Mode)

- When “FORT KNOX” is connected with PC via USB port, the front OLED display window shows a message “The new HDD is connected. Will you use Password?”. Press <0> button on the front touch panel to select Normal external mode (not using security mode).

Will you use Password?
0=NO, 1=YES

- Below “Lock icon” means it's the status of normal external storage mode.

🔒 LOCKDOCK

- In case of new HDD, to use it as an external HDD storage, users have to initialize the HDD under computer's operating system. (See page 2 – HDD initialization). In case of used HDD, it can be used instantly without any other process.

USE as an external security HDD (Security Mode)

- When “FORT KNOX” is connected with PC via USB port, the front OLED display window shows the message “The new HDD is connected. Will you use Password?”. Press <1> button on the front touch panel of “FORT KNOX” to use Password (Security mode).

Will you use Password?
0=NO, 1=YES

- LCD shows message “Enter a password for the first time”. Then, please enter your password (4-8 digits) by pressing numeric buttons on the front panel of “FORT KNOX” and press <Enter> button to apply it.

Enter a password first time

- It's the process to identify your password. Just enter the same password you entered in previous (2) step and press <Enter> button to apply it. (If you enter wrong or different password, you can't go to the next step. You have to re-start the process again.)

Re-enter your password

- Once the password input process is completed, the LCD will show the 16 digits Master-Key numbers of the installed HDD. LCD will show the master-key numbers till you press any other button on “FORT KNOX”.

0A1B3C4D
5E6F7G8H

<Example Display>

What is the ‘Master-Key’?

Master-key is the essential code to recover HDD data. If you forget the password you entered on the security HDD or your “FORT KNOX” get damaged, you can't connect or read any data on HDD. Even though you connect the HDD to your PC system, your PC can't read anything at all because it's totally encrypted by AES 256 bit encryption technology.

Master-key is not for individual user. The data can be recovered only by our special program in our official service centers. To recover HDD data, you have to visit us with “FORT KNOX” and Master-key. If you lose Master-key, it's impossible for us to recover your HDD data in any events. So, you should write down Master-Key and keep it safely, just in case.

[Note] If HDD itself gets physical damage, it's impossible to recover any data on damaged HDD even with Master-key.

- Press any button on “FORT KNOX”, then Master-key disappears. In Security mode, LCD shows 'Lock' icon and LOCKDOCK' message as below.

🔒 LOCKDOCK

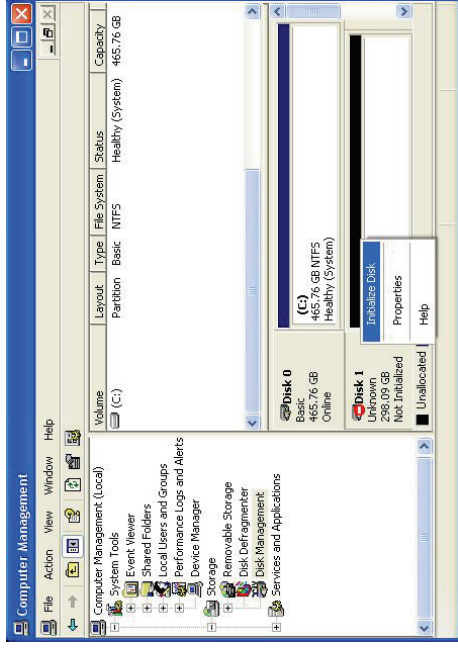
- Before using HDD, users have to initialize the HDD under computer's operating system. (See page 2 – HDD initialization).

Note : In case of using Security mode, HDD installed in “FORT KNOX” should be initialized newly even though HDD already got formatted or it's used HDD. When user selects “Security Mode”, PC recognizes the HDD in “FORT KNOX” as a totally new HDD.

HDD Initialization

In case of a brand new hard drive, it should be initialized, partitioned and formatted first for normal use (reading, writing) regardless of security function. Below instructions are for Windows 7 but the steps are very similar for Windows XP, Vista.

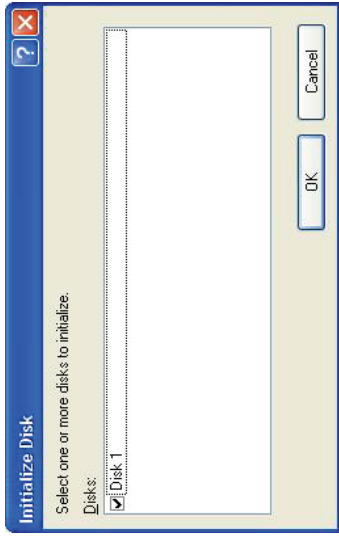
- 1) Select [Control Panel]-> [Administrative Tools], then open up [Computer Management], then go to [Disk Management]
- 2) Your PC can't recognize the HDD installed in "FORT KNOX".



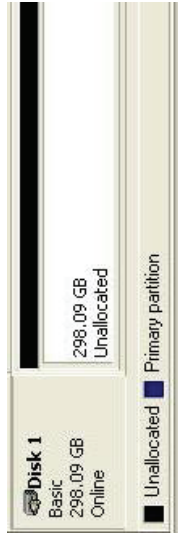
- 3) Right-click on the external hard drive and select [Initialize Drive] to begin the partitioning and formatting process.

Caution: Please be careful not to initialize the used or existing HDD which includes any valuable DATA on it.

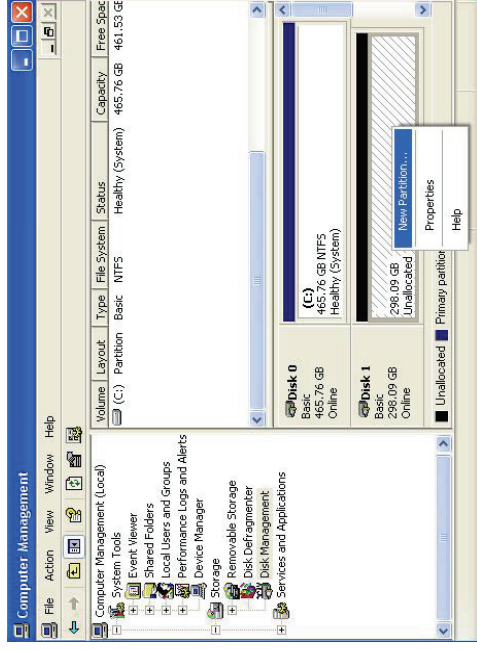
- 4) Select "MBR" in the menu of [Initialize Disk] and press "OK".



- 5) [Initialize Disk] is completed, then the Hard Disk displays "Online".



- 6) Now, you can begin the partitioning and formatting process on the Hard Disk. Right-click on the driver's space details (below picture) and select "New Partition...".



- 7) "New Partition Wizard" comes up giving you some selections about the new partition. In the first tab select the partition type. The usual is primary. Click "Next" and set the partition size. Set the max size if you want all the space to be allocated to a single partition or smaller size if you want to create more partitions.

USB Connection Speed

It shows the current USB port speed between "FORT KNOX" and the connected PC or Laptop. It shows total 3 different USB connection types (USB 3.0, USB 2.0, USB1.0).



Password Change

User can change the password which is being used under security mode. Go to [Password Change] in the menu and press [ENTER] button to run it. After inputting current password, new password input window come up.

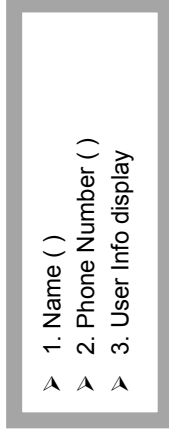


Write Protect

Users can set up 'write protection' feature on the installed HDD. To use this feature, users have to select and check on the square box in menu by pressing "Enter" button. Under the write protection, nobody write or delete the data on the HDD, only read available.

User Info

Users can show and display "User Name or Nick name" instead of "FORT KNOX" logo. Also, in case of input wrong password, phone number can be displayed via front OLED display. It's useful function when users lost "FORT KNOX" (security mode). To display Name and Phone number, users have to select and check on the square box in menu (3>User Info Display) by pressing "Enter" button.



Refer to below combination table for letter input method of Name. In case Phone Number, use front numeric touch panel to input the number. To input '-', use 'Enter' button.

How to input letters for Name

Check the below combination table of letter creation. Then, input each related numbers and press "Enter", then the numbers is changed into the letter. After inputting all letters, just press 'Menu' button to apply.

0	S	14	.	28	<	42	J	56	X	70	f	84	t
1	I	15	/	29	=	43	K	57	Y	71	g	85	u
2	"	16	0	30	>	44	L	58	Z	72	h	86	v
3	#	17	1	31	?	45	M	59	[73	i	87	w
4	\$	18	2	32	@	46	N	60	\	74	j	88	x
5	%	19	3	33	A	47	O	61]	75	k	89	y
6	&	20	4	34	B	48	P	62	^	76	l	90	z
7	'	21	5	35	C	49	Q	63	-	77	m	91	{
8	(22	6	36	D	50	R	64	`	78	n	92	
9)	23	7	37	E	51	S	65	a	79	o	93	}
10	*	24	8	38	F	52	T	66	b	80	p	94	~
11	+	25	9	39	G	53	U	67	c	81	q	95	□
12	,	26	:	40	H	54	V	68	d	82	r		
13	-	27	;	41	I	55	W	69	e	83	s		

Initialization of HDD usage mode

Users can initialize the HDD installed in "FORT KNOX". Press (Touch) <1> button to initialize HDD. To make it clearly, press <1> button once again.



After HDD initialization, it's impossible to rescue or recover any data on it. So, please be careful not to lose your valuable data and double check before HDD initialization.

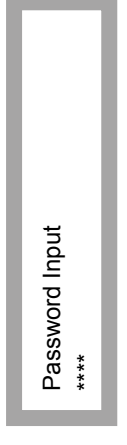
HDD Connection / Disconnection (Smart Mount/Un-mount Function)

Abruptly removing storage devices or external hardware from your PC can damage to the device and result in loss of data. So, it's recommended to get in the habit of safely removing your external hardware via "Safely Remove Hardware". But, it's rather annoying job.

"FORT KNOX" supports smart MOUNT and UN-MOUNT feature to make simple, convenient and safe hardware removal. Press "MENU" button over 2 seconds, then HDD is automatically disconnected. It works like [Safely Remove Hardware]. * To run this function, there should be no data transfer between PC and "FORT KNOX" at that time.



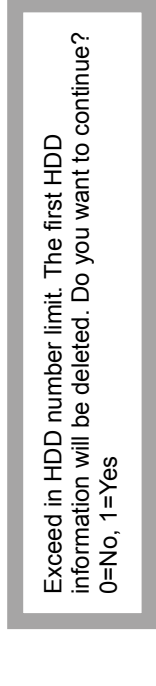
Again, press "MENU" button over 2 seconds, then HDD is automatically connected. (If "FORT KNOX" is Security Mode, Password input window pops up. In case of normal mode, directly HDD is connected).



It's very convenient feature when you step out for a moment leaving the connected "FORT KNOX" on the desk.

Q & A

1. "FORT KNOX" supports both 3.5" & 2.5" SATA I, II, III HDD/SSD?
 - ▶ Yes, it supports all
2. Is there any limit on capacity of HDD?
 - ▶ No, there's no limit on capacity of HDD.
3. How's the data transfer speed under Security Mode? Is there any slow down or delay in data transfer due to using Security Mode?
 - ▶ Regardless of Security Mode, "FORT KNOX" supports the same USB3.0 Super Speed.
4. What's AES 256 Encryption? Is it safe solution?
 - ▶ AES (Advanced Encryption Standard) is a symmetric-key encryption standard adopted by the U.S. government. The AES ciphers have been analyzed extensively and are now used as a world top level security standard. AES 256 is the most advanced algorithm among AES standards (AES 128, 192, 256).
5. I forgot my Password. Can I recover the data on HDD?
 - ▶ Without the correct password, nobody can connect and read the data on HDD of "FORT KNOX". To recover the DATA on HDD, users have to visit our official A/S center or country official distributor themselves. When visiting A/S center, users should bring Master-key and "FORT KNOX" device together. We consider someone who brings "FORT KNOX" & Master-key as the authorized owner. This is a precaution to prevent unauthorized access when it's stolen or lost.
6. In case the "FORT KNOX" device gets damaged while in Security Mode and I can't read any data on the HDD, even though there is no problem with the installed HDD. How can I recover the data HDD?
 - ▶ It is impossible. To recover the data, you have to visit our A/S center with "FORT KNOX" (with HDD) and Master key. After checking Master key, A/S center can support data recover & back-up for you.
7. If I take off HDD from "FORT KNOX" and connect it to PC, PC can read any data on HDD?
 - ▶ No! PC can't read anything because it's fully encrypted. It just recognizes it as an unformatted HDD.
8. I change HDD and set the same password, but why a new Master-key is created?
 - ▶ "FORT KNOX" create a unique Master key per HDD. "FORT KNOX" can remember and save max 50 different Master-key info on it.



If the number of HDD exceed 50 (Max available quantity), the above message appears. If users select <1, Yes>, the first HDD info (among 50) is deleted and the HDD is totally initialized. If users select <0, No>, the connected HDD is just connected as a Normal mode (Not encrypted).

9. My TV supports Media Play (Audio and Video). Can I connect FORT KNOX to my TV and play the media files even under Safety Mode?
 - ▶ Yes, it's the greatest advantage of "FORT KNOX". You can connect "FORT KNOX" to any device which supports USB Host. After entering Password, it works just like USB 3.0 super speed storage. (Blu-ray Player, Mobile phone, Media Player, TV, PC, MAC.)